

Pembroke - 2 bed/2 bath with private fenced yard



Property Description:

Ashley 15B

A beautifully maintained 2-bedroom, 2-bathroom end-unit apartment is located in the quiet and desirable Fairylands community. Offering added privacy, the unit features a spacious, fully fenced yard—ideal for outdoor living and entertaining.

The interior boasts a modern kitchen, in-unit washer and dryer, and tile flooring throughout for easy maintenance. Both the kitchen and master bedroom provide direct access to a porch that opens onto the generous yard space, creating a seamless indoor-outdoor flow.

Additional features include a covered carport for convenient parking. This property combines comfort, functionality, and a peaceful setting, making it an excellent place to call home.

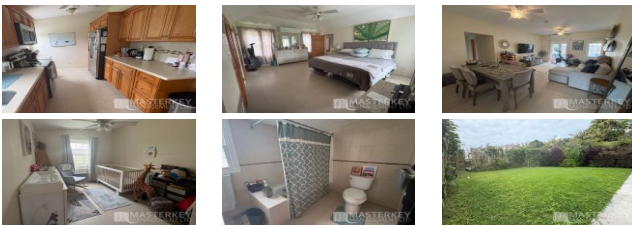
Available June 1, 2026.

Agent Information

Bettina Wales

777-8315

bettina@masterkey.bm



Property Details

Type	For Rent
Price	\$5,000
Property ID	MKR7176
City/Parish	Pembroke
Bed Rooms	2
Bathrooms	2

